

Multisporters by Nature!



WORK—  
BOOK/  
FALL/  
WINTER  
2023

ISBJÖRN   
OF SWEDEN



WELCOME TO THE WORLD OF  
ISBJÖRN OF SWEDEN®





# ISBJÖRN

OF SWEDEN



## CONTENT

Our Philosophy	4—5
Our Story	6—7
Our Sustainability- Mission	8—13
Trek and Trail	14—17
Baselayer	18—23
Mid Layer	24—31
Shell Layer	32—47
Padded	48 - 67
Accessories	68—75
Contact	76



# WE ARE EQUIPPING THE ADVENTURERS OF TOMORROW

---

## ISBJÖRN IS A LIFESTYLE

*Isbjörn* is not a fashion trend or a studio brand. *Isbjörn* is a lifestyle brand and what we do, we do for real! We want to inspire and encourage young families of today to enjoy and explore the outdoors with their kids. With our *Isbjörn* gear, we aim to make sure that the outdoor experience will be a positive one and maybe a starting point of a longlasting relationship. We hope that the love and respect for the outdoors will stay with the kids when entering into their adult life. In that way we truly build the adventurers of tomorrow. It is as simple as that!

## DURABILITY IS KEY TO SUSTAINABILITY

We all know that the production of garments affects the environment. For every garment we can produce in recycled materials, we are very happy and proud. We continuously strive to make our garments in materials thoroughly tested and approved for not being hazardous to the environment.

Our garments endure tough times when used, but can still be handed over to a smaller sister, brother or a friend. Not only once, but twice and even three times. In that way we can together limit the use of natural resources. That is being environmentally friendly according to us!

## THE SAFETY FOR YOUR CHILD

Safety for your child is important to all parents. By buying garments without hazardous chemicals and with recycled or biodegradable materials, you do not only make a good choice for the planet, but also for the health of your child.

## BUY SMART WITH A LONG TERM PERSPECTIVE

We truly offer sustainability in the perspective that one garment can be inherited and used again and again. That way the initial cost is not so high at the end of the day. That way we save both you wallet and planet resources.

## WHAT'S NEW IN OUR FW2023 COLLECTION

This season, all padded products are lined with Primaloft Black Insulation, made out of 100% recycled polyester fiber. This is all in alignment with us reaching our goal to become a fully circular brand in 2030.

All our zippers from YKK is PFA free, which makes us 100% free from PFA in both materials and trims.

With *Isbjörn*, you can trust us in always making incremental improvements on our products. For you as our beloved customer AND for the planet. We do this together!

*Maria Frykman,*

Maria Frykman, CEO and co-founder

# OUR STORY

---

Nordic KidsWear AB and the brand *Isbjörn of Sweden*, was founded 2005 by two female entrepreneurs and mothers.

The business idea was born when they had their first babies in 2001, not finding proper outdoor gear and wanting to keep their outdoor lifestyle, they took action and started Isbjörn of Sweden. In 2015 the brand celebrated their 10th anniversary and the journey so far has been fantastic.

Isbjörn is a lifestyle brand. We equip the adventurer of tomorrow. Our aim is to make the best possible outdoor wear ever, for the ones that need it the most; our children. And we do so with the environment in mind, all the way!

Isbjörn garments are made to endure a tougher climate and a harder use. It therefore came as a rather natural choice to pick the toughest bear on the planet as the symbol for the brand — the polar bear.

The Isbjörn collection covers the age from 0—16 years, offering all necessary layers you might need for your child to be active outdoors, at day care, in school or in spare time with family.

Today the brand is distributed at 10 different markets and by over 300 exclusive retailers all over the world.

The *DNA of Isbjörn* is to bring true passion, technical performance and product sustainability into the world of kidswear and teenage outdoor clothing, by offering products in the same high quality as premium adult outdoor brands, adding some love and a fashionable touch to it and also taking an environmentally friendly approach when choosing the materials.

We do not compromise!

Why settle for less? It is quite simple actually. What is best for your child is also best for the planet.

See you outdoors!

*Camilla & Maria, founders of Isbjörn*







SU

- A

P



A child wearing a blue snow suit and hat is walking on a snowy slope. The child is in the upper left quadrant of the image, leaving a trail of footprints in the snow. The background is a vast, open snowy landscape under a bright sky.

# OUR SUSTAIN ABILITY LEDGE

# OUR SUSTAINABILITY PLEDGE

**OUR PLEDGES** Making premium function wear with our kids' and our nature's wellbeing in mind has always been our DNA. Our garments should withstand the test of time, lots of play, outdoor exploration, and growing kids. With that said we are fully aware that the fashion industry is a major contributor to the rise in global greenhouse gas emissions. That's why we have created a set of pledges; a roadmap to becoming climate neutral and fully circular, so we can contribute to the UN's goal of limiting our planet's temperature rise to 1.5 degrees by 2050. We will continue making long lasting garments that will serve your family for many seasons and leave a healthy planet for future generations. You as a customer can help us by staying informed, caring for your garments, and buying only what you need. Together with you we will reach our goals.

## ACTIONS TO REDUCE CO2 EMISSIONS

### ACTIONS TO REDUCE CO2 EMISSIONS 50% BY 2033 (YEARLY REDUCTION OF 4.2% MINIMUM WITH BASEYEAR 2021)



#### ANNUAL REPORTING

Publish our yearly CO2 emissions report for complete transparency. Results calculated by an independent Agency.



#### LOGISTICS

- Chose local materials when possible
- Ship by train when financially possible
- Rule out air as shipment method



#### RENEWABLE ENERGY

Successivley switch to renewable energy at:

- Suppliers and producers
- Warehouses
- Our Stockholm HQ



#### CIRCULAR BUSINESS

By 2030 we will be completely ciricular by:

- Using only recycled or biodegradable materials
- Offering Repair and Reuse



#### UPCYCLING

We will reduce our waste by making products of waste materials. First product will be available FW22



#### INVEST IN NATURE

Invests in healthy forestry to reduce Co2 emissions and increase wildlife.



# OUR ROAD MAP TO NET ZERO 2045

---

## 2022 Climate Journey

Isbjörn will within 2022 measure and report our energy use and greenhouse gas emissions and, in accordance with UN's goal, do our part to limit the global temperature rise to 1.5 degrees Celsius by 2050. But we want to take a bigger responsibility. Therefore, our goal is to reduce our emissions by at least 50% by 2033 and we aim to be at net zero emissions by 2045. In order to achieve this we need to be fully circular; use only recycled or biodegradable materials, work with renewable energy, and continue to support the harvesting of healthy forestry.

## 2026 Free of Microplastics

We have already started phasing out virgin microplastics in our materials and by 2026 our collection will be completely microplastic free.

Microplastics are especially bad for our nautical life as the microbeads travel in the water stream from our households to the ocean and end up in the stomach of sea life. The microbeads easily soak up harmful chemical and hurts the flora and ecosystem of the ocean. Often the microplastic travels right back to us and ends up in our stomach through the seafood and fish we eat.

We will never make synthetic pile garments and we are working hard on phasing out synthetic fleece.

## 2030 We are Circular

Our mission is to become a fully circular brand.

We are constantly working on phasing out our virgin materials. It's not an easy task to find recycled fibers that are as durable and water consumption strict as our BlueSign certified Nylon, but we won't give up until we find them. It's an important step to us becoming fully circular. By 2030 all our materials will be 100% recycled or biodegradable, and our customers will be able to return worn out garments for either reselling or recycling so we can close our loop.

# 100% PFA FREE MATERIALS



## WHY DO BIRDS FEATHERS NOT GET WET?

Why does this type of water repellency in nature work without perfluorinated compounds?

## EFFECTIVE IMPLEMENTATION OF NATURAL FUNCTIONS

The *Rudolf Group* has answered these questions by means of the scientific branch Bionic. Bionic does not mean to just imitate nature, but to realise its functional principles and to transfer them to technical solutions. Thus, novel, sustainable and ecologically advantageous technologies for imparting hydrophobic properties have been

developed. Hydrophobic finishing with *Bionic-Finish® Eco* is based on a fluorine-free recipe. Hyperbranched, hydrophobic polymers with ramified structures like in tree tops orientate in an orderly manner on the textile and crystallise on specifically adjusted comb polymers. The optimum arrangement of many of these functional elements is highly effective. Additional boosters (crosslinking agents) ensure the optimum attachment and durability on many fibre substrates.

## READ MORE

Rudolf Group: [www.rudolf.de/en/](http://www.rudolf.de/en/)  
Isbjörn's environmental profile: [www.isbjornofsweden.com](http://www.isbjornofsweden.com)

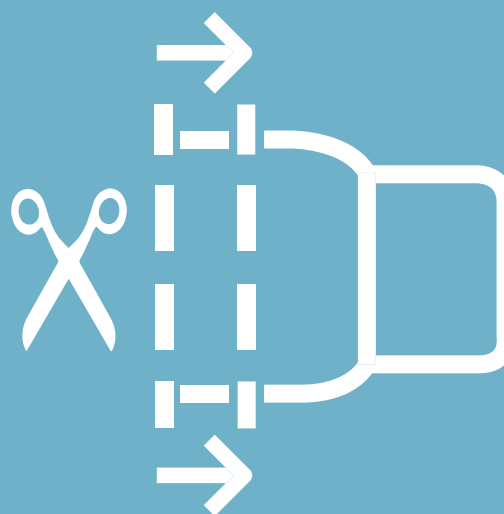
# 2 IN 1 EXPANDABLE IN SIZE

## ALL 2-LAYER SHELL AND PADDED ARE EXPANDABLE IN SIZE

When you turn the sleeve or leg inside out, you will find an orange seam.

## UNDO THE ORANGE STITCHES AND THE INNER LINING WILL RELEASE ADDITIONAL 2.5-3CM

This way you can re-use your Isbjörn-garment for at least two seasons for the same child. Taken well care of, your Isbjörn garment is then ready to be passed over to a younger sibling or a new family.



## GROW CUFF



# STANDARDS AND PARTNERS

## NATIONAL FOREST STEWARDSHIP



### *What does FSC stand for?*

FSC stands for Forest Stewardship Council, an organization that works to promote the practice of sustainable forestry worldwide. The Forest Stewardship Council sets standards for forest products, independently certifies that these standards have been met, and bestows labels upon the products that qualify.

### *What is FSC certified bamboo?*

If the bamboo is labeled as "FSC Certified," it means that the bamboo used in the product and the manufacturer that made it met the requirements of the Forest Stewardship Council

### *Why FSC is required?*

Becoming FSC certified shows that you comply with the highest social and environmental standards on the market. Public concern about the state of the world's forests and in this case bamboo resources is increasing, and FSC provides you with a credible solution to complex environmental and social issues

## RESPONSIBLE WOOL STANDARD RWS®

### *What is the RWS and what objectives does it have?*



The Responsible Wool Standard is a voluntary standard that addresses the welfare of sheep and the land they graze on.

- 1) Provide a tool to recognize the best practices of farmers.
- 2) Ensure that wool comes from farms that have a progressive approach to managing their land, practice holistic respect for animal welfare of the sheep and respect the Five Freedoms of animal welfare.
- 3) Ensure strong chain of custody for certified materials as they move through the supply chain

---

# BLUESIGN® SYSTEM PARTNER

## THE FIVE PRINCIPLES OF THE BLUESIGN® SYSTEM

What is the meaning of a sustainable textile business? It means to conserve valuable resources, to minimize environmental impact and to drive innovations. Industrial partners will in particular have to examine all their components and processes on the basis of clear principles. In this spirit the textile industry will be able to guarantee sustainability to both consumers and

environment.

1. *Resource productivity*— sustainable use of energy and raw materials
2. *Consumer safety*— responsibility to people and environment
3. *Water emission*— improved protection of the natural circulation
4. *Air emission*— less air pollution for a better climate
5. *Occupational health & safety* — improve working conditions.



A person wearing a teal hooded jacket and tan cargo pants is standing against a wall made of vertical wooden planks. Their hands are pressed against the wall. Large, bold, yellow text is overlaid on the image.

# TREK & TRAIL/ WILD @HEAR



When you're wild at heart, you need outdoor gear that moves with you.

Our *Trek & Trail* collection offers versatile durability for outdoorsy youngsters. Cool, comfortable and quick-drying garments for everyday play and adventure.

Give them some good wild times.



MOISTURE  
WICKING

QUICK  
DRYING





ISBJÖRN





## MATERIAL COMPOSITION, TECHNICAL STANDARD & ECO PROFILE

**Main material:** 94% Nylon, 6% Elastane, 170gr/m<sup>2</sup>  
**Reinforcement:** 88% Nylon Cordura®, 12% Elastane, 250gr/m<sup>2</sup>  
**Eco profile:** bluesign®, extremely durable.

---

## TRAPPER PANT KIDS CORDURA®

A durable allround *Trapper Pant* is made from a fantastic soft, strong and quick drying Nylon with Cordura® reinforcements. The trapper pant is slightly stretchy offering an ultimate fit and comfort whilst being active. The pant has an adjustable waistline with velcro straps and has adjustable leg endings. The garment has pre-bent knees for maximum freedom of movement. This piece goes excellent as an every day pant and is a great companion on any trip, climbing, trekking or hiking. Bluesign®

**Art. No:** 2800

**Sizes:** 86/92 — 98/104 — 110/116 — 122/128cl

**Colors:** Graphite — SkyBlue — Oat — Lavender — Moss



---

## TRAPPER PANT TEEN CORDURA®

A durable allround *Trapper Pant* made from a fantastic soft, strong and quick drying Nylon with reinforcements in Cordura®. The trapper pant is slightly stretchy giving it the ultimate fit and comfort when being active. The pant has an adjustable waistline with velcro straps and adjustable leg endings. The garment has pre-bent knees for maximum freedom of movement. This piece goes excellent as an every day pant and is a great companion on any trip, climbing, trekking or hiking. Ventilation zippers are to be found at the upper leg providing instant comfort when needed and a zipper pocket at the front leg. Bluesign® certified material.

**Art. No:** 2810

**Sizes:** 134/140 — 146/152 — 158/164 — 170/176cl

**Colors:** Graphite — SkyBlue — Oat — Moss — Black





BASE  
LAYER/  
OUR  
1ST  
LAYER



No sweat, just glory. Our base layers are masters of moisture management.

If they get wet, they'll dry quickly. Keeping young ones warm and happy for hours of outdoor fun.

Plus the soft, durable wool and bamboo blend is really easy to wash and care for.



MOISTURE  
WICKING



STAY WARM



QUICK  
DRYING



## MATERIAL COMPOSITION, TECHNICAL STANDARD & ECO PROFILE

**Material:** 49% RWS® Merino Wool (18.5 micron), 5% Nylone, 46% FSC® certified Bamboo

**Weight:** 240 gr/m<sup>2</sup>.

**Eco profile:** bluesign® certified materials, full line RWS® Merino Wool, FSC® Bamboo, natural anti-odor, anti-bacterial material.



### HUSKY JUMPSUIT BASELAYER



*Husky Jumpsuit* Babies have difficulties in regulating their own body temperature and therefore merino wool is the ideal material for them to wear closest to their skin. Extra long cuffs in both sleeve- and leg endings, to be folded down as the baby grows. Buttoning at the side of the front chest as well as at the crotch down to the leg endings. Our baselayers should wash in 30 degrees with a wool sensitive detergent to keep form and function without pilling. The garment is quick-drying. Made out of full line RWS® merino-wool and FSC® certified bamboo. Bluesign® certified material.

**Art. No:** 6031

**Weight:** 240 gr/m<sup>2</sup>

**Sizes:** 56/62 — 68/74 — 80/86 cl

**Colors:** SkyBlue — FrostPink

## HUSKY SWEATER BASELAYER

Our *HUSKY Sweater Base Layer* is made in a perfect blend of full line RWS® merino wool and FSC® certified bamboo, aiming for a blend of natural fibers offering a function of warmth capability, softness and durability as well as an effective vapour transmission. The cut has a backdrop and comfort seems for a perfect fit. Our baselayers should wash in 30 degrees with a wool sensitive detergent to keep form and function without pilling. The garment is quick-drying. Bluesign® certified material.

**Art. No:** 6011

**Weight:** 240 gr/m<sup>2</sup>

**Sizes:** 86/92 — 98/104

— 110/116 — 122/128cl

**Colors:** SkyBlue — FrostPink — Black



## HUSKY LONGJOHN BASELAYER

Our *Husky Long John Base Layer* is made in a perfect blend of full line RWS® merino wool and FSC® certified bamboo. Aiming for a blend of natural fibers offering a function of warmth capability, softness and durability as well as an effective vapour transmission. The cut has an extended height at the back for a perfect fit and flat lock seams for comfort. The longjohn has a soft elastic in the waistline. Our baselayers should wash in 30 degrees with a wool sensitive detergent to keep form and function without pilling. The garment is quick-drying. Bluesign® certified material.

**Art. No:** 6021

**Weight:** 240 gr/m<sup>2</sup>

**Sizes:** 86/92 — 98/104

— 110/116 — 122/128cl

**Colors:** SkyBlue — FrostPink — Black





## MATERIAL COMPOSITION, TECHNICAL STANDARD & ECO PROFILE



**Material:** 49% RWS® Merino Wool (18.5 micron), 5% Nylone, 46% FSC® certified Bamboo

**Weight:** 240 gr/m<sup>2</sup>.

**Eco profile:** bluesign® certified materials, full line RWS® Merino Wool, FSC® Bamboo, natural anti-odor, anti-bacterial material.



## HUSKY SWEATER BASELAYER

Our *HUSKY Sweater Base Layer* is made in a perfect blend of full line RWS® merino wool and FSC® certified bamboo. Aiming for a blend of natural fibers offering a function of warmth capability, softness and durability as well as an effective vapour transmission. The cut has a back-drop and comfort seems for a perfect fit. Our baselayers should wash in 30 degrees with a wool sensitive detergent to keep form and function without pilling. The garment is quick-drying. Bluesign® certified material.



**Art. No:** 6061

**Weight:** 240 gr/m<sup>2</sup>

**Sizes:** 134/140 — 146/152

— 158/164 — 170/176cl

**Colors:** SkyBlue — FrostPink — Black

## HUSKY LONGJOHN BASELAYER

Our *Husky Long John Base Layer* is made in a perfect blend of full line RWS® merino wool and FSC® certified bamboo. Aiming for a blend of natural fibers offering a function of warmth capability, softness and durability as well as an effective vapour transmission. The cut has an extended height at the back for a perfect fit and flat lock seams for comfort. The longjohn has a soft elastic in the waistline. Our baselayers should wash in 30 degrees with a wool sensitive detergent to keep form and function without pilling. The garment is quick-drying. Bluesign® certified material.



**Art. No:** 6071

**Weight:** 240 gr/m<sup>2</sup>

**Sizes:** 134/140 — 146/152

— 158/164 — 170/176cl

**Colors:** SkyBlue — FrostPink — Black









MID  
LAYER /  
OUR  
2ND  
LAYER



Looking for an adventure buddy? Look no further.

Outdoorsy youngsters deserve the best.

Isbjörn midlayers are crafted from durable, top-performance materials that offer as much warmth as the season requires. Letting out moisture when play gets intense. Breathing style and stamina.

Let's have some fun together.



MOISTURE  
WICKING



STAY WARM



LIGHT  
WEIGHT



QUICK  
DRYING



## MATERIAL COMPOSITION, TECHNICAL STANDARD & ECO PROFILE



**Material:** 100% PES, 100% recycled  
**Weight:** 185 gr/m<sup>2</sup>  
**Eco profile:** Bluesign®,  
100% recycled PES



### LYNX MICRO FLEECE JUMPSUIT

The *Lynx Micro Fleece Jumpsuit* is a wonderful and soft thinner middle layer helping the baby regulate its body temperature. The garment can be used all year round, as an outer layer during late spring and summer as well as a lighter insulation piece during the colder season. The garment has soft cuffs in sleeve and leg endings. The zipper has a zipper garage and goes from the collar all the way down to the left leg ending, simplifying dressing and undressing as well as changing diapers. We are very happy to be able to offer this favourite piece in 63% recycled fiber. Bluesign® certified material.

**Art. No:** 3102  
**Weight:** 185 gr/m<sup>2</sup>  
**Sizes:** 56/62 — 68/74 — 80/86 cl  
**Colors:** Windchime — Bubblegum — Navy

### LYNX MICRO FLEECE JACKET

The *Lynx Micro Fleece Jacket* is one of our most beloved insulation pieces. Now also available in 100% recycled fiber. Thin, supple and extremely soft. Perfectly suited as a baselayer and a lighter insulation layer. It's ability to regular the body temperature makes the jacket very comfortable to wear when being active. The garment can be

used all year round. The zipper has a protection piece. Zipper and embroidery come in a darker tone-in-tone colour. Bluesign® certified material.

**Art. No:** 3112  
**Weight:** 185 gr/m<sup>2</sup>  
**Sizes:** 86/92 — 98/104 — 110/116 — 122/128 — 134/140 — 146/152cl  
**Colors:** Windchime — Bubblegum — Navy



### LYNX MICRO FLEECE PANT

The *Lynx Micro Fleece Pant* is a versatile pant in a thin, supple and extremely soft fleece. Now also available in 100% recycled fiber. The pant can be used as an insulation pant or just as a soft pant. It's ability to regulate the body temperature makes the pant very comfortable to wear when being active and the soft cuffs in the leg ending keeps the garment in place. Bluesign® certified material.

**Art. No:** 3132  
**Weight:** 185 gr/m<sup>2</sup>  
**Sizes:** 86/92 — 98/104 — 110/116 — 122/128 — 134/140 — 146/152cl  
**Colors:** Windchime — Bubblegum — Navy









## MATERIAL COMPOSITION, TECHNICAL STANDARD & ECO PROFILE



**Material composition:** 48% recycled Polyester, 44% Nylon, 8% Elastane

**Eco profile:** Recycled Polyester, Bluesign®, top notch durability due to high amount of Nylon fiber

## PANDA HOODIE KIDS

*Panda Hoodie for Kids* is a snap-on hood midlayer providing excellent insulation and vapour emission capabilities. The material has a smooth jersey face for easy layering and a soft brushed inner fleece side, providing a superb next-to-skin comfort. The jacket has a front zipper with a garage, extended sleeves with thumb holes and two side pockets with hidden zippers.

Unisex fit. Bluesign® certified material.

**Art. No:** 6341

**Weight:** 220 gr/m<sup>2</sup>

**Sizes:** 86/92 — 98/104 — 110/116 — 122/128 cl

**Colors:** Black — SkyBlue — OrangePeel — FrostPink — EmeraldGreen — Mint



## PANDA PANT

*Panda* pant provides a superior insulation under hardshell items like Kuling, Hurricane or the Expedition pant. A 4-way stretch midlayer providing excellent insulation and vapour emission capabilities. The material has a smooth jersey face for easy layering and a soft microfleece inner which provides a superb next-to-skin comfort. Unisex fit. full length. Bluesign® certified material.

**Art.No:** 6381

**Sizes:** 86/92 — 98/104 — 110/116 — 122/128

**Art.No:** 6391

**Sizes:** 134/140 — 146/152 — 158/164 — 170/176cl

**Color:** Black



## PANDA HOODIE TEEN

Once you put your *PANDA Hoodie* on, it will probably be very hard to take it off. PANDA is a 4-way stretch midlayer providing excellent insulation and vapour emission capabilities. The material has a smooth jersey face for easy layering and a soft microfleece inner which provides a superb next-to-skin comfort. The teen version has a high collar with zip garage.

Extended sleeves with thumb holes. Two side pockets with zippers. Unisex fit. Bluesign® certified material.

**Art. No:** 6351

**Weight:** 220 gr/m<sup>2</sup>

**Sizes:** 134/140 — 146/152 — 158/164 — 170/176cl

**Colors:** Black — SkyBlue — OrangePeel — FrostPink — EmeraldGreen — Mint

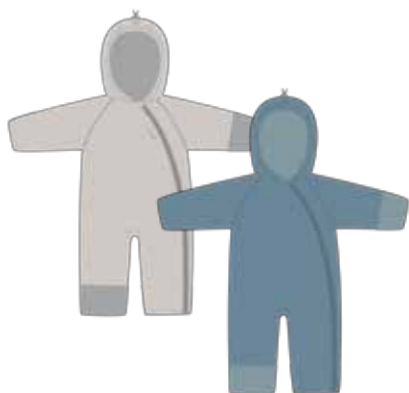


## MATERIAL COMPOSITION, TECHNICAL STANDARD & ECO PROFILE

**Material:** 46% recycled Wool, EU origin, 35% Polyester, 16% Nylon and 3% Other Fibres

**Weight:** 380gr/m<sup>2</sup>

**Eco profile:** 46% recycled Wool, OEKO-Tex, EU origin, Anti-Odor (natural), Anti-Bacterial (natural)



### SHAUN JUMPSUIT

Our *Shaun Fleece Jumpsuit* is a lovely baby jumpsuit in a recycled wool/synthetic blend providing a comfortable thermal insulation. The fabric surface has a knitted structure with a melange effect and a soft brushed inner fleece side, offering a high next-to-skin comfort. The baby model has a zipper from the collar down to the leg ending, with a zipper garage. The style offers expandable gloves and socks, perfect to buy somewhat bigger in size and grow into. The garment should wash on 30 degrees with a wool sensitive detergent, keeping the form and function of the garment without pilling. The material offers a high warmth-to-weight ratio and the design makes it suitable for almost any occasion; sport or leisure.

**Art. No:** 6671

**Weight:** 380 gr/m<sup>2</sup>

**Sizes:** 56/62 — 68/74 — 80/86 cl

**Colors:** LunarBeam — PearlBlue

## SHAUN HOODIE KIDS

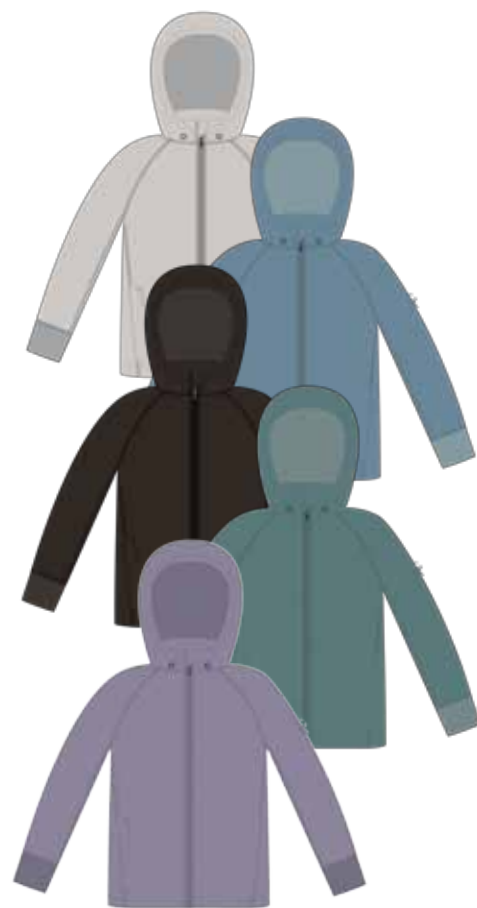
Our *Shaun Fleece Hoodie* for Kids is a zip off hoodie jacket in a recycled wool/synthetic blend providing a comfortable thermal insulation. The fabric surface has a knitted structure with a melange effect and a soft brushed inner fleece side, offering a high next-to-skin comfort. The kids model has a snap off hoodie construction with zip garage. Extended sleeves using the inner soft fleece as a nice design detail, with thumb holes. Zip side pockets. The garment should wash in 30 degrees with a wool sensitive detergent, keeping the form and function of the garment without pilling. The material offers a high warmth-to-weight ratio and the design makes it suitable for any occasion; sport or leisure.

**Art. No:** 6681

**Weight:** 380 gr/m<sup>2</sup>

**Sizes:** 86/92 — 98/104 — 110/116 — 122/128 cl

**Colors:** LunarBeam — PearlBlue — Espresso — Pine Silver — Lavender



## SHAUN HOODIE TEEN

Our *Shaun Fleece Hoodie* is a hooded jacket in a recycled wool/synthetic blend providing a comfortable thermal insulation. The fabric surface has a knitted structure with a melange effect and a soft brushed inner fleece side, offering a high next-to-skin comfort. The teen model has a hoodie with integrated high collar. Extended sleeves with thumb holes. Zip side pockets. The garment should wash on 30 degrees with a wool sensitive

detergent, keeping the form and function of the garment without pilling. The material has a high warmth-to-weight ratio and the design makes it suitable for almost any occasion; sport or leisure.

**Art. No:** 6691

**Weight:** 380 gr/m<sup>2</sup>

**Sizes:** 134/140 — 146/152 — 158/164 — 170/176cl

**Colors:** LunarBeam — PearlBlue — Espresso — PineSilver — Lavender









# SHELL/ OUR 3RD LAYER

Waterproof garments are not hard to find. But highly breathable waterproof ones, that are also green at heart, are a rare breed.

Outdoorsy youngsters deserve top-performance gear, no compromises. Gear that can take a beating and keep out fierce winds and downpours. Not to mention look great too.

Bring on the wet weather.



WINDPROOF

WATER  
PROOF

GORE CUFF



BREATHABLE





## MATERIAL COMPOSITION, TECHNICAL STANDARD & ECO PROFILE



**Outer material:** 2-layer laminated bluesign® certified fabric, 100% Nylon Double Tactel, 212gr/m<sup>2</sup>

**Inner material:** 100% Nylon, bluesign® certified, 60gr/m<sup>2</sup>

**Technical std:** 15.000mm/15.000gr/m<sup>2</sup>/24h, 100% seam sealed

**Eco profile:** All material bluesign® certified, BIONIC Finish Eco® DWR

## TODDLER HARDSHELL JUMPSUIT

*The TODDLER hardshell playsuit* is a waterproof and breathable 2-layer piece for the child just starting to explore on their own. Fully seamsealed with water repellent zippers. The zipper goes from the collar down to the hip for easy dressing and undressing. The garment has a loose fit for optimal freedom of movement and to enable an easy layer on layer dressing principle. It has a button off hood construction, soft cuffs at the sleeve endings, silicone elastic and rubber straps at the leg endings. Fluorocarbene free and water repellent treatment. Bluesign® certified materials.



EXPANDABLE IN SIZE

**Art. No:** 4680

**Weight:** 100% Nylon Double Tactel, 212gr/m<sup>2</sup>

**Sizes:** 74 — 80 — 86 — 92 — 98cl

**Colors:** Moss — Bubblegum

## MATERIAL COMPOSITION, TECHNICAL STANDARD & ECO PROFILE



**Outer material:** 2-layer bluesign® certified fabric, 100% Nylon Oxford Full Dull 250gr/m<sup>2</sup>

**Inner material:** 100% Nylon, 60gr/m<sup>2</sup>, bluesign® certified fabric

**Technical std:** 15.000mm/15.000gr/m<sup>2</sup>/24h, 100% seam sealed

**Eco profile:** All materials are bluesign® certified, BIONIC Finish Eco® DWR

## KULING HARDSHELL PANT KIDS

*Kuling Hardshell Pant* is an excellent everyday and even all year round piece. Waterproof and breathable 2 layer hard shell. Fully seamsealed with water repellent zipper. This pant is an excellent vapour emission substitute for any kind of traditional rainwear and a very comfortable and durable garment. The model has a high waistline with a zipper at the side. It has permanent elastic straps and an elastic tightening in leg endings and durable rubber straps under the feet. Fluorocarbene free water repellent treatment. Bluesign®.



EXPANDABLE IN SIZE

**Art. No:** 2611

**Weight:** Oxford Full Dull 250gr/m<sup>2</sup>

**Sizes:** 74/80 — 86/92 — 98/104 — 110/116cl

**Colors:** Black — Navy



## MATERIAL COMPOSITION, TECHNICAL STANDARD & ECO PROFILE



**Outer material:** 2-layer bluesign® certified fabric, 100% Nylon Tactel 155gr/m²

**Inner material:** 100% mesh polyester, 60gr/m², bluesign® certified material

**Technical std:** 15.000mm/15.000gr/m²/24h, 100% seam sealed

**Eco profile:** All materials are bluesign® certified, BIONIC Finish Eco® DWR.

## STORM HARDSHELL JACKET KIDS

Our *Storm Hardshell Jacket* offers everything you need from a 2-layer Hardshell when it comes to performance and comfort. It is 100% waterproof and highly breathable. The jacket is fully seamsealed with water repellent zippers. The garment has a snap off hood construction with one adjustable point at the back and elastics in the sides for a nice fit. A front zipper with a zipper garage and a front flap. Two waterproof chest pockets for both looks and function. Pre-bent sleeves for optimal freedom of movement, with soft stretchy cuffs in the sleeve endings. Two adjustable points

at the hem. Mesh lining inside. This jacket is an excellent all year around garment, that can be used for a variety of weather conditions and activities. Fluorocarbene free water repellent treatment. Bluesign® certified materials.

### EXPANDABLE IN SIZE.

**Art. No:** 4600

**Weight:** 155gr/m²

**Sizes:** 86/92 — 98/104 — 110/116 — 122/128 — 134/140 cl

**Colors:** SkyBlue—Mint—Moss—Saffron—Navy—Love—Frostpink—Lavender









## MATERIAL COMPOSITION, TECHNICAL STANDARD & ECO PROFILE



**Outer material:** 2-layer bluesign® certified fabric, 100% Nylon Oxford Full Dull 250gr/m<sup>2</sup>

**Inner material:** 100% polyester, 60gr/m<sup>2</sup>, bluesign® certified material

**Technical std:** 15.000mm/15.000gr/m<sup>2</sup>/24h, 100% seam sealed

**Eco profile:** All materials are bluesign® certified, BIONIC Finish Eco® DWR.

## HURRICANE HARDSHELL PANT KIDS

*Hurricane Hardshell Pant* is a 2-layer piece offering a garment suitable for all activities where you face wind, water and need protection. Waterproof and highly breathable. Fully seamsealed with water repellent zippers. The pant has a front zipper, adjustable waistline with velcro straps, removable elastic and loops for a belt if so preferred. The pant has zippers at the leg endings, offering a construction that makes it easier to use over a ski boot (at winter) or a hiking boot during the warmer season. The leg ending has silicone elastic, making the pant stay in place. Pre-bent knees for optimal freedom of movement. This is an excellent all year around garment, suitable for a variety of weather conditions and activities. Fluorocarbon free water repellent treatment. Bluesign® certified materials.

EXPANDABLE IN SIZE

Art. No: 3621

Weight: 250gr/m<sup>2</sup>

Size: 110/116 — 122/128cl

Colors: Black — Navy



## MATERIAL COMPOSITION, TECHNICAL STANDARD & ECO PROFILE



**Outer material:** 2-layer bluesign® approved fabric, 100% Nylon Tactel 212gr/m<sup>2</sup>

**Technical std:** 15.000mm/15.000gr/m<sup>2</sup>/24h, 100% seam sealed

**Eco profile:** bluesign®, BIONIC Finish Eco® DWR

## RAIN & WIND PANT KIDS AND TEENS

*Rain Pant* is a slightly lighter version of our popular “heavy duty” Hard Shell Pant. This garment should be used as a protection piece for rain- and wind during the warmer summer season when trekking, hiking or pursuing other spring & summer and early fall activities. It can also be used for every day school activity for the smaller kids. Fluorocarbon free, water repellent treatment. Bluesign®.

EXPANDABLE IN SIZE

Art. No: 2650 / 2660

Weight: 212gr/m<sup>2</sup>

Sizes 2650: 86/92 — 98/104 — 110/116 — 122/128cl

Sizes 2660: 134/140 — 146/152 — 158/164 — 170/176cl

Color: Black









## MONSUNE HARDSHELL JACKET TEEN

Our *Monsune Hardshell Jacket* offers everything you need from a 2-layer hardshell when it comes to performance, comfort and attitude. Waterproof and highly breathable. Fully seam sealed with water repellent zippers and mesh lining inside. The jacket has a high collar construction with a front zipper with zipper garage and two chest pockets. The hood has three adjustable points. The jacket has pre-bent sleeves for optimal freedom of movement and soft stretchy cuffs in sleeve endings with a velcro closing. Further-

more, it has two adjustable points at the hem. This jacket is an excellent all year around garment, that can be used for a variety of weather conditions and activities. Expandable in size. Fluorocarbon free water repellent treatment. Bluesign®.

### EXPANDABLE IN SIZE

**Art. No:** 5600

**Weight:** 100% Tactel Nylon 155gr/m²

**Sizes:** 134/140 — 146/152 — 158/164 — 170/176cl

**Colors:** Black — Moss

— Windchime — Lavender — Mint SkyBlue — Saffron — Navy

## MATERIAL COMPOSITION, TECHNICAL STANDARD & ECO PROFILE



**Outer material:** 2-layer bluesign® certified fabric, 100% Nylon Tactel 155gr/m²

**Inner material:** 100% polyester, 60gr/m², bluesign® certified material

**Technical std:** 15.000mm/15.000gr/m²/24h, 100% seam sealed

**Eco profile:** All materials are bluesign® certified, BIONIC Finish Eco® DWR.



## MATERIAL COMPOSITION, TECHNICAL STANDARD & ECO PROFILE



**Outer material:** 2-layer bluesign® approved fabric, 100% Nylon Oxford Full Dull 250gr/m²

**Inner material:** 100% Nylon, 60gr/m², bluesign® certified material

**Technical std:** 15.000mm/15.000gr/m²/24h, 100% seam sealed

**Eco profile:** All materials are bluesign® certified, BIONIC Finish Eco® DWR.

## HURRICANE HARDSHELL PANT TEEN

*Hurricane Hardshell Pant* is a 2-layer piece offering a garment suitable for all activities where you face wind, water and need protection. Waterproof and highly breathable. Fully seamsealed with water repellent zippers. The pant has a front zipper, adjustable waistline with velcro straps, removable elastic and loops for a belt if so preferred. The pant has zippers at the leg endings, offering a construction that makes it easier to use over a ski boot (at winter) or a hiking boot during the warmer season. The leg ending has silicone elastic, making the pant stay in place. Pre-bent knees for optimal freedom of movement. This is an excellent all year around garment, suitable for a variety of weather conditions and activities. Fluorocarbon free water repellent treatment. Bluesign® certified materials.

### EXPANDABLE IN SIZE

**Art. No:** 4621

**Weight:** 100% Nylon Oxford Full dull 250gr/m²

**Size:** 134/140 — 146/152 — 158/164cl

**Colors:** Black — Navy















## MATERIAL COMPOSITION, TECHNICAL STANDARD & ECO PROFILE



**Outer material:** 3-layer bluesign® approved fabric, 100% Nylon Tactel 220gr/m<sup>2</sup>

**Technical std:** 15.000mm/15.000gr/m<sup>2</sup>/24h, 100% seam sealed, RECCO® reflector inside

**Eco profile:** bluesign®, BIONIC Finish Eco® DWR

### RECCO®

RECCO® The two-part system consists of a RECCO® detector used by organized rescue groups and RECCO® reflectors that are integrated into your outerwear. The reflector is permanently attached, requires no training and no batteries to function. It is always "on" and ready.



## EXPEDITION 3L HARDSHELL JACKET TEEN

*Expedition Hardshell Jacket and Pant* offers everything you need of a 3-layer hard shell when it comes to details, performance, comfort and attitude. Waterproof and highly breathable. Fully seam-sealed with water repellent zippers. This garment gives our adventurous teenager an equipment worthy of a true adventurer, keeping them in sync with the elements, independent of activity and weather conditions. The jacket has a high collar with front zipper and a zipper garage, two chest pockets and generous ventilation zippers in the sides to provide a quick and optimal ventilation when so needed. The jackets has a snow gaiter inside, prebent sleeves, adjustable hem at three points and an adjustable helmet compatible hood. Pre-bent velcro closure sleeves with a stretchy cuff inside for a perfect fitting. Inside pocket for valuables. Tone-in-tone colored reflex tone-in-tone, to secure

safety. the jacket is equipped with a RECCO® reflector. Fluorocarbon free water repellent treatment. Bluesign®.

**Art. No:** 4640

**Weight:** 220gr/m<sup>2</sup>

**Sizes:** 134/140 — 146/152 — 158/164 — 170/176cl

**Colors:** Hibiskus — Denim



## EXPEDITION 3L HARDSHELL PANT TEEN

*Expedition Hardshell Pant* offers everything you need of a 3-layer hardshell when it comes to technical performance, comfort and attitude. This garment gives our adventurous teenager an equipment worthy of a true adventurer, keeping them perfect in sync with the elements, independent of activity and weather conditions. The pant has an adjustable waist with velcro straps and belt loops if so preferred. Removable elastic waist cuff as well as elastic straps. Front zipper. Hip height leg zippers for extra ventilation and easy on and off. Zipped leg pockets. Prebent knees for optimal freedom of movement. Snowgaiter and a curved back at leg ending to avoid damage to

the hem of the boots. Abraison reinforcement at the lower leg part. The stretchy cuff in the adjustable waistline is removable, making the pant very versatile in function. Small pocket at the top for valuables. Reflexes made in a tone-in-tone colour to secure an elegant safety. Equipped with RECCO® a reflector. Fluorocarbon free water repellent treatment. Bluesign® certified material.

**Art. No:** 4650

**Weight:** 220gr/m<sup>2</sup>

**Sizes:** 134/140 — 146/152 — 158/164 — 170/176cl

**Colors:** Hibiskus — Denim





PADDLED  
TAKE  
A BEAT-  
ING



O/

Forget clumsy winter clothing. Our insulated collection is designed for outdoor action. Up the slope, down the hill, on the trail and off-piste.

Young explorers deserve great winter gear, no exceptions. Garments that follow movements effortlessly. Highly breathable, waterproof and warm clothing that can take a beating.

Not to mention look fantastic, feel fantastic.



STAY WARM

WATER  
PROOF

GROW CUFF



BREATHABLE





## OUR STRATEGIC ALLIANCE WITH PRIMALOFT®

*Isbjörn* entered a strategic alliance with *PrimaLoft*® in 2016. Our first mutual goal was to use PrimaLoft® padding in all our padded winter products, which we accomplished already in fall/winter 2016. Next step was to create a wider PrimaLoft® program within the *Isbjörn* collection, which resulted in the FROST Jacket in 2017 as well as our Award Winning Stroller Bag in 2019.

## MATERIAL COMPOSITION, TECHNICAL STANDARD & ECO PROFILE



**Material:** 100% Nylon 60gr/m<sup>2</sup>, Primaloft® Black Insulation 133gr/m<sup>2</sup> **Eco profile:** All materials are bluesign® certified, Primaloft® padding out of 100% post consumer waste, PFA free DWR from Rudholm Chemie GmbH, PFA free zippers from YKK®



### FROST LIGHTWEIGHT JUMPSUIT

The *Frost lightweight Jumpsuit* is a delightful lightweight padded baby jumpsuit providing 100% windproofness, breathability and slight water repellency. Rest assured that your baby will be perfectly balanced in temperature in this one. The padding is Primaloft® Black, 100% post consumer waste, which provides maximum warmth to weight ratio, water repellancy and a superior softness. The jumpsuit has elegant tone-in-tone details. The front zipper goes from the collar all the way down to the leg and has a zipper garage and a protection piece behind the zipper. The garment has flexible gloves and socks, making it perfect to buy somewhat big and grow into it. Bluesign®, PFA free DWR and YKK® zippers.

**Art. No:** 7670  
**Weight:** 60gr/m<sup>2</sup>, 133gr/m<sup>2</sup>  
**Sizes:** 56/62 — 68/74 — 80/86 cl  
**Colors:** SkyBlue — Mole — Bubblegum — Mint

## FROST LIGHTWEIGHT JACKET KIDS

*Frost lightweight Jacket.* This jacket, with a snap-on/off hood, works equally well as an outer layer for chilly days in early spring/fall as a winter jacket in good weather conditions or as an insulation piece in really cold weather conditions. The outer fabric is an ultra light weight durable nylon fabric, which offers 100% windproofness, breathability and an eco-friendly water repellancy. The padding is a Primaloft® Black, 100% padding made out of post consumer waste PrimaLoft®,

is well known for its superior warmth-to-weight ratio, water repellency, superior loftiness as well as softness. The front zipper has a zipper garage, and a zip off hood construction for safety and two open side pockets. PFA free water repellent treatment. Bluesign® certified materials.

**Art. No:** 5660  
**Weight:** 60gr/m<sup>2</sup>, 133gr/m<sup>2</sup>  
**Sizes:** 86/92 — 98/104 — 110/116 — 122/128 cl  
**Colors:** Black — Mint — Mole — Bubblegum — SkyBlue — Saffron



## FROST LIGHTWEIGHT JACKET TEEN

*Frost lightweight Jacket.* This jacket works equally well as an outer layer for chilly days in early spring/fall as well as a winter jacket in good weather conditions. This piece can also be used as a heavier insulation layer for really cold weather conditions. The outer fabric is an ultra light-weight yet durable nylon fabric, offering 100% windproofness, breathability and an eco-friendly water repellancy. The padding is Primaloft® Black insulation, made out of 100% post consumer waste. PrimaLoft®, is well known for its superior warmth-to-weight ratio,

water repellency, superior loftiness as well as softness. The front zipper has a zipper garage, high collar construction with a zipper garage, two open side pockets and one chest pocket with a zipper. Fluorocarbon free water repellancy treatment. Bluesign®.

**Art. No:** 6660  
**Weight:** 60gr/m<sup>2</sup>, 133gr/m<sup>2</sup>  
**Sizes:** 134/140 — 146/152 — 158/164 — 170/176 cl  
**Colors:** Black — Mole — Teal — SkyBlue — Saffron





## MATERIAL COMPOSITION, TECHNICAL STANDARD & ECO PROFILE



**Outer material:** 2-layer bluesign® certified material, 100% Nylon Tactel 155gr/m<sup>2</sup>, 250gr/m<sup>2</sup> Nylon Oxford Full Dull

**Padding:** PrimaLoft® Black Insulation 133gr/m, 100% post consumer waste

**Technical std:** 15.000mm/15.000gr/m<sup>2</sup>/24h, 100% seam sealed

**Eco profile:** bluesign® certified materials, padding in 100% post consumer waist, BIONIC Finish Eco® DWR, PFA free zippers from YKK®

## MATERIAL COMPOSITION, TECHNICAL STANDARD & ECO PROFILE



**Outer material:** 2-layer bluesign® 100% Nylon Tactel 155gr/m<sup>2</sup>, 250 gr/m<sup>2</sup> Oxford Full Dull

**Padding:** PrimaLoft® Black Insulation 133gr/m<sup>2</sup>, 100% post consumer waste

**Technical std:** 15.000mm/15.000gr/m<sup>2</sup>/24h, 100% seam sealed

**Eco profile:** bluesign®, BIONIC Finish Eco® DWR, PrimaLoft® 100% post consumer waste,

## HALFPIPE JUMPSUIT

*Halfpipe Snowsuit* comes in four new colors this season. Waterproof and breathable 2 layer snowsuit. Fully seamsealed with water repellent zippers. PrimaLoft® padding for optimal warmth-to-weight ratio and comfort. A more loose fit construction aiming for the bigger kids, still offering two adjustable points in the waistline if so preferred. It has a front zipper with a zipper garage, a chest pocket as well as a ski pass pocket. Adjustable button off hood construction, pre-bent sleeves and knees for optimal freedom of silicone elastic and rubber straps in leg endings to avoid the hem movement. Tight leg endings with silicone elastic and rubber straps

## TODDLER PADDED JUMPSUIT

*Toddler Padded Jumpsuit* a waterproof and breathable 2 layer padded piece for the smallest ones just starting to explore on their own. Fully seamsealed with water repellent zippers. PrimaLoft® padding for optimal warmth-to-weight ratio and comfort. The zipper goes from the collar down to the hip for easy dressing and undressing. The garment has a loose fit for optimal freedom of movement and to enable an easy layer on layer dressing principle. It has a button off hood construction with a zip-off faux fur construction, soft cuffs in the sleeve endings, silicone elastic and rubber straps in leg endings. Fluorocarbene free water repellent treatment. Bluesign® certified materials.

EXPANDABLE IN SIZE

Art. No: 4670

Weight: 155gr/m<sup>2</sup>, 133gr/m<sup>2</sup>

Sizes: 74 — 80 — 86 — 92 — 98cl

Colors: FrostPink — Mole — Mint



being trampled down and for the leg endings to stay in place during play. Expandable size in sleeves and legs. Tone-in-tone reinforcement at the back below waistline and from knees and down at the front. Reflex at both upper sleeves, both legs and at the upper back. Fluorocarbene free water repellent treatment. Bluesign®.

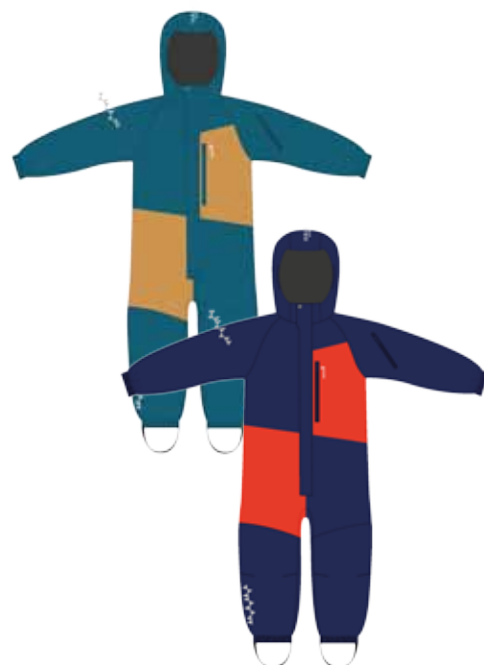
EXPANDABLE IN SIZE

Art.No: 5700

Weight: 155gr/m<sup>2</sup>, 250gr/m<sup>2</sup>

Sizes: 104 — 110 — 116 — 122 — 128 — 134 — 140 cl

Colors: Navy/SunPoppy — Teal/Lion







AWARD WINNING  
SNOWSUIT FOR THE  
9TH CONSEQUENT  
YEAR IN A ROW

*"The Penguin snowsuit has won the Premium Category in the yearly Scandinavian Best-in-Test contest for the 9th year in a row. Not only has the test results proven its longevity as a product but also shown an indisputable and outstanding performance in keeping the children warm, dry and perfectly balanced in temperature, independent of weather conditions and activities."*



## MATERIAL COMPOSITION, TECHNICAL STANDARD & ECO PROFILE



**Outer material:** 2-layer bluesign® certified material, 100% Nylon Tactel 155gr/m², 250gr/m² Nylon Oxford Full Dull

**Padding:** PrimaLoft® Black Insulation 133gr/m, 100% post consumer waste

**Technical std:** 15.000mm/15.000gr/m²/24h, 100% seam sealed

**Eco profile:** bluesign® certified materials, padding in 100% post consumer waste, BIONIC Finish Eco® DWR, PFA free zippers from YKK®

## PENGUIN SNOWSUIT

*Penguin Snowsuit.* Our bestseller has won *Best-in-Test* in the Premium category for the 9th year in a row. Waterproof and breathable 2 layer padded snowsuit. Fully seamsealed with water repellent PFA free zippers. PrimaLoft® recycled polyester padding for optimal warmth-to weight ratio, comfort and moveability. Front zipper with a front flap, zipper garage and one waterproof chest pocket. Adjustable button off hood construction, pre-bent sleeves and knees for optimal freedom of movement. Two adjustable points in the waistline. Tighthened leg endings with silicone elastic and rubber straps, to avoid the hem

being trampled down and for the leg endings to stay in place during play. Expandable size in sleeves and legs. Reinforcement at the back below waistline and from knees and down at the front. Reflectors at both upper sleeves, both legs and at the upper back. Fluorocarbene free water repellent treatment. Bluesign®.

### EXPANDABLE IN SIZE

**Art.No:** 4700

**Weight:** 155gr/m², 250gr/m²

**Sizes:** 80 — 86 — 92 — 98 — 104 — 110 — 116 — 122 — 128cl

**Colors:** Mint — FrostPink — Teal Lavender — Smoothie — Moss — SkyBlue — Navy — Saffron — Love



PADDED







## MATERIAL COMPOSITION, TECHNICAL STANDARD & ECO PROFILE



**Outer material:** 2-layer bluesign® approved fabric, 100% Nylon Tactel 155gr/m<sup>2</sup>

**Padding:** PrimaLoft® Black Insulation 133gr/m<sup>2</sup>, 100% post consumer waste **Technical std:** 15.000mm/15.000gr/m<sup>2</sup>/24h, 100% seam sealed **Eco profile:** bluesign® certified materials, BIONIC Finish Eco® DWR, padding 100% post consumer waste, PFA free zipper YKK®

## HELICOPTER WINTER JACKET KIDS

The *Helicopter Winter Jacket* is our most popular padded winter jacket for kids up to 128cl. Waterproof and breathable 2-layer jacket padded with PrimaLoft® for optimal warmth-to weight ratio and comfort. Fully seam-sealed with water repellent zippers. An adjustable button off hood construction, front zipper with zipper garage, pre-bent sleeves for optimal freedom of movement and soft cuffs including a velcro closure in the sleeve endings for a perfect fit. Two chest pockets, an inner

pocket for valuables and a ski pass pocket on the left upper sleeve. Adjustable snowgaiter inside and a two point adjustable hem. Expandable size in sleeves. Fluorocarbon free water repellent treatment and zippers. Bluesign®.

### EXPANDABLE IN SIZE

**Art. No:** 4550

**Weight:** 155gr/m<sup>2</sup>

**Sizes:** 86/92 — 98/104 — 110/116 — 122/128 — 134/140 cl

**Colors:** Moss — Mint — Teal — Smoothie — FrostPink — SkyBlue — Saffron — Love



## MATERIAL COMPOSITION, TECHNICAL STANDARD & ECO PROFILE



**Outer material:** 2-layer bluesign® approved fabric, 100% Nylon Tactel 155gr/m<sup>2</sup>

**Padding:** PrimaLoft® Black Insulation 133gr/m<sup>2</sup>, 100% post consumer waste

**Technical std:** 15.000mm/15.000gr/m<sup>2</sup>/24h, 100% seam sealed

**Eco profile:** bluesign® certified materials, BIONIC Finish Eco® DWR, padding 100% post consumer waste, PFA free zippers from YKK®

## POWDER WINTER PANT KIDS & TEEN

*Powder Winter Pant* is a durable high waist cut winter pant managing even the worst kind of conditions (winters without snow). Waterproof and breathable 2 layer piece, padded with PrimaLoft for optimal warmth-to weight ratio and comfort. Fully seamsealed with water repellent zippers. Front zipper, non-removable elastic straps and pre-bent knees for optimal freedom of movement. Offers a small pocket at the waistline for smaller valuables. Snowgaiters at the base of the legs with silicon elastic and rubber straps, to keep the pant in place. A curved shape at the back of the hem, to avoid being destroyed by the boot. Reflexes on both legs. Expandable in size. Fluorocarbon free water repellent treatment. Bluesign®.

**Art. No:** 3720

**Weight:** 250gr/m<sup>2</sup>

**Sizes 3720:** 86 — 92 — 98 — 104 — 110 — 116 — 122 — 128 cl

**Colors 3720:** Black — Navy

**Sizes 4720:** 134 — 140 — 146 — 152 — 158 — 164 cl

**Colors 4720:** Black — Navy

**EXPANDABLE IN SIZE**











"Best Overall Ski Jacket 2021" @indybest, The Independent, Oct 2021

## MATERIAL COMPOSITION, TECHNICAL STANDARD & ECO PROFILE



**Outer material:** 2-layer bluesign® approved fabric, 100% Nylon Tactel 155gr/m<sup>2</sup>

**Padding:** PrimaLoft® Black Insulation 133gr/m<sup>2</sup>, 100% post consumer waste

**Technical std:** 15.000mm/15.000gr/m<sup>2</sup>/24h, 100% seam sealed

**Eco profile:** bluesign®, BIONIC Finish Eco® DWR, PrimaLoft®, 100% post consumer waste, PFA free zippers from YKK®

## CARVING WINTER JACKET TEEN

*Carving Winter Jacket* is our most popular padded winter jacket for our teens. Waterproof and breathable 2-layer jacket padded with PrimaLoft for optimal warmth-to weight ratio and comfort. Fully seamsealed with water repellent zippers. An adjustable high collar construction, adjustable hood at three points, front zipper with zipper garage, pre-bent sleeves for optimal freedom of movement and soft cuffs including a velcro closure in the sleeve endings for a perfect fit. Two chest pockets, an

inner pocket for valuables and a ski pass pocket on the left upper sleeve. Adjustable snow-gaiter inside and a two point adjustable hem. Expandable size in sleeves. Fluorocarbene free water repellent treatment. Bluesign® certified materials.

### EXPANDABLE IN SIZE

**Art. No:** 5550

**Weight:** 155gr/m<sup>2</sup>, 133gr/m<sup>2</sup>

**Sizes:** 134/140 — 146/152 — 158/164 — 170/176cl

**Colors:** Black — Moss — Windchime Mint—SkyBlue—Teal—Lion—Navy



## MATERIAL COMPOSITION, TECHNICAL STANDARD & ECO PROFILE



**Outer material:** 2-layer bluesign® approved fabric, 100% Nylon Tactel 212gr/m<sup>2</sup>

**Padding:** PrimaLoft® Black Insulation 133gr/m<sup>2</sup>, 100% post consumer waste

**Technical std:** 15.000mm/15.000gr/m<sup>2</sup>/24h, 100% seam sealed

**Eco profile:** bluesign® certified materials, BIONIC Finish Eco® DWR, PrimaLoft® padding made out of 100% post consumer waste. Expandable in size. PFA free zippers from YKK®

## OFFPIST SKI PANT TEEN

*The Offpist Ski Pant* is a fantastic piece of garment with a fashionable touch combined with top notch performance. Waterproof and breathable. Fully seamsealed with water repellent zippers. PrimaLoft® padding for optimal warmth-to-weight ratio and comfort. Medium high cut waist, padded for comfort, adjustable with velcro straps. Front fly. Knee high leg zips for ventilation and easy on and off. Removable elastic straps and belt loops if so preferred. Prebent knees for optimal freedom of movement. Snow gaiters with

button opening at the base of the legs and a curved shape at the back to avoid the hem being destroyed by the boots. Reflectors on both legs. Expandable in size. Cordura as abraison at the hem. Fluorocarbene free DWR and zippers. Bluesign® certified materials.

### EXPANDABLE IN SIZE

**Art. No:** 4570

**Weight:** 212gr/m<sup>2</sup>, 133gr/m<sup>2</sup>

**Sizes:** 134/140 — 146/152 — 158/164 — 170/176cl

**Colors:** Teal — Lion —Black WindChime — SkyBlue — Navy











## MATERIAL COMPOSITION, TECHNICAL STANDARD & ECO PROFILE



**Outer material:** 2-layer bluesign® approved fabric, 100% Nylon Tactel 155gr/m<sup>2</sup>

**Padding:** PrimaLoft® Black Insulation 133gr/m<sup>2</sup>, 100% post consumer waste

**Technical std:** 15.000mm/15.000gr/m<sup>2</sup>/24h, 100% seam sealed

**Eco profile:** bluesign®, BIONIC Finish Eco® DWR, PrimaLoft®, 100% post consumer waste, PFA free zippers from

## ROCKER SKI JACKET TEEN

*Rocker Ski Jacket* is a development of our first ski jacket in 2012 and comes in a limited edition upgraded to 2022 standard of materials and sustainability. A waterproof and highly breathable 2-layer jacket padded with PrimaLoft for optimal warmth-to weight ratio and comfort. Fully seamsealed with water repellent zippers. An adjustable high collar construction, adjustable hood at three points, front zipper with zipper garage, pre-bent sleeves for optimal freedom of movement and soft cuffs including a velcro

closure in the sleeve endings for a perfect fit. Two chest pockets, an inner pocket for valuables and a ski pass pocket on the left upper sleeve. Adjustable snowgaiter inside and a two point adjustable hem. Expandable size in sleeves. Fluorocarbene free water repellent treatment and zippers. Bluesign® certified materials.

EXPANDABLE IN SIZE

Art. No: 4598

Weight: 155gr/m<sup>2</sup>, 133gr/m<sup>2</sup>

Sizes: 134/140 — 146/152 — 158/164 — 170/176cl

Colors: Teal/Lion — Navy/SunPoppy



## MATERIAL COMPOSITION, TECHNICAL STANDARD & ECO PROFILE



**Outer material:** 2-layer bluesign® approved fabric, 100% Nylon Tactel 212gr/m.

**Padding:** PrimaLoft® Black insulation 133gr/m<sup>2</sup>, 100% recycled post consumer waste

**Technical std:** 15.000mm/15.000gr/m<sup>2</sup>/24h, 100% seam sealed

**Eco profile:** bluesign® certified materials, BIONIC Finish Eco® DWR, PrimaLoft® padding made out of 100% recycled post consumer waste. Expandable in size. PFA free zippers from YKK®

## ROCKER SKI PANT TEEN

*The Rocker Ski Pant* is a development of our first ski pant in 2012 and upgraded to 2022 standard of materials and sustainability. Waterproof and breathable. Fully seamsealed with water repellent zippers. PrimaLoft® padding for optimal warmth-to-weight ratio and comfort. Medium high cut waist, padded for comfort, adjustable with velcro straps. Front fly. Knee high leg zips for ventilation and easy on and off. Removable elastic straps and belt loops if so preferred. Prebent knees for optimal freedom of movement.

Snow gaiters with button opening at the base of the legs and a curved shape at the back to avoid the hem being destroyed by the boots. Reflectors on both legs. Expandable in size. Cordura as abraision at the hem. Fluorocarbene free DWR. Bluesign® certified materials.

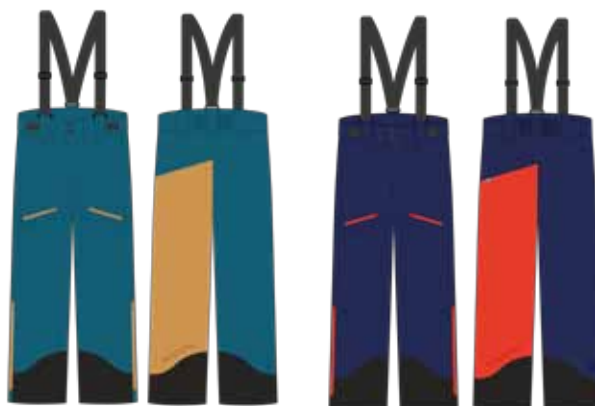
EXPANDABLE IN SIZE

Art. No: 4599

Weight: 212gr/m<sup>2</sup>, 133gr/m<sup>2</sup>

Sizes: 134/140 — 146/152 — 158/164 — 170/176cl

Colors: Teal/Lion — Navy/SunPoppy



PADDED



## MATERIAL COMPOSITION, TECHNICAL STANDARD & ECO PROFILE



**Outer material:** 2-Layer bluesign® approved fabric, 100% Nylon Tactel 155gr/m²

**Padding:** PrimaLoft Black Insulation 60gr/m², 100% post consumer waste

**Technical std:** 15.000mm/15.000gr/m²/24h, 100% seam sealed

**Eco profile:** bluesign®, BIONIC Finish Eco® DWR, PrimaLoft® Black Eco, 100% recycled consumer waste

### THE PARKA TEEN

*The Parka* this item was introduced in FW19 for the first time and has turned into a beloved item for our costumers. We have chosen to add a slight padding of 60gr/m² for this item, making it more of a winter item. Besides that, you will find the same high technical standard on this piece as you do on all our outer garments, padded or not. The jacket has a long shape cut is, with a slit at the back and a shorter zipper at the front, for optimal movement. Three point adjustable hood, pre-bent sleeves, soft cuff in sleeve endings, adjustable sleeve endings. tone-in-tone reflexes for safety. Two outside pockets and front flap over the front zipper, with our signature buttons. All in all, a top notch urban chic piece of garment with a technical outdoor standard. look fantastic, feel fantastic. What else is there to ask for?

**Art. No:** 4597

**Weight:** 155gr/m², 60gr/m²

**Sizes:** 134/140 — 146/152 — 158/164 — 170/176cl

**Colors:** Black — Windchime



PADDED

A young woman with long brown hair is smiling and looking towards the camera. She is wearing a dark blue knit beanie with yellow and white patterns, a red jacket, and a blue jacket. She is in a snowy environment, and her face and clothing are dusted with snow. The background is a soft-focus snow-covered landscape.

ACCES-  
SORIES  
NO  
CHEAT-  
ING

You can't cheat in the outdoors.

A simple hat may be just that — or a functional little garment that makes exploring nature even more enjoyable.

Our kids deserve the best outdoor gear. So we made a whole set of great accessories to match the rest of our range.

No cheating.





## MATERIAL COMPOSITION, TECHNICAL STANDARD & ECO PROFILE



**Material:** 49% Wool(18.5 micron), 5% Nylone, 46% Bamboo interlock

**Weight:** 200 gr/m<sup>2</sup>.

**Eco profile:** bluesign® certified material, full line RWS standard wool, FSC® certified bamboo, natural anti-odor and anti-bacterial material.



## HUSKY BEANIE

*Husky Beanie* is a model with a regular cut made in a functional blend of wool and bamboo fiber from FSC certified crops. A perfect fit for layering with helmet. Comfortable during high activity and sports such as soccer, biking, running, nordic skiing, skating (under helmet). Providing excellent moisture management and a cooling effect when sweating. Quick drying.

Bluesign® certified material.

**Art. No:** 6042

**Weight:** 240gr/m<sup>2</sup>

**Sizes:** 48/50 — 52/54 — 56/58cm

**Colors:** Black— Frostpink — SkyBlue



## HUSKY BABY CAP

*Husky Baby Cap* is a traditional newborn baby cap model made in a functional blend of wool and bamboo fiber from FSC certified crops. Soft and natural fiber closest to the babies skin, providing a natural functionality. The cap can be tied under the chin. Quick drying.

Bluesign® certified material.

**Art. No:** 6051

**Weight:** 240gr/m<sup>2</sup>

**Sizes:** 36/38 — 40/42

**Colors:** SkyBlue — Frostpink



## MATERIAL COMPOSITION, TECHNICAL STANDARD & ECO PROFILE



**Material composition:** 48% recycled Polyester, 44% Nylon, 8% Elasthane

**Eco profile:** Recycled Polyester, Bluesign®, top notch durability due to high amount of Nylon yarn

## PANDA BEANIE

*Panda Beanie* is a supercool and soft Beanie made out of the same material as our lovely Panda Hoodie. Regular shape with a somewhat higher top, ended with an overlock seam that curls slightly.

**Art. No:** 6321

**Weight:** 220gr/m<sup>2</sup>

**Sizes:** 48/50 — 52/54 — 56/58cm

**Colors:**

Black — EmeraldGreen — SkyBlue — Mint — FrostPink — OrangePeel



## MATERIAL COMPOSITION, TECHNICAL STANDARD & ECO PROFILE



**Material:** Shell 50% Wool, 50% Acrylic. Mulesing free wool.  
**Lining:** 100% Polyester. Jersey knit  
**Eco-Profile:** bluesign® certified materials, full line RWS®. Mulesing free wool.



## HAWK KNITTED CAP

*Hawk Knitted Cap.* Regular cut. 50/50 blend of merino wool and acrylic, offering warmth and softness. Jersey knit offers a stretchy and comfortable cap. The cap is fully lined with a soft micro fleece providing wind- and cold protection and a nice next-to-skin comfort. Full line Restrict Wool Standard certified wool and all in all bluesign certified materials.

**Art. No:** 9221

**Sizes:** 48/50 — 52/54 — 56/58cm

**Colors:** Black — Navy — Mint — Frostpink — SunPoppy — SkyBlue — Saffron — Mole



## EAGLET KNITTED CAP

*Eaglet knitted Cap* Shaped cut. Covers ears well. Perfect fit for layering with helmet. 50/50 blend of merino wool and acrylic, offering warmth and softness. Jersey knit offers a stretchy and comfortable cap. The cap is fully lined with a soft micro fleece providing wind- and cold protection and a nice next-to-skin comfort.

Full line Restrict Wool Standard certified wool and all in all bluesign certified materials

**Art. No:** 9211

**Sizes:** 44/46 — 48/50cm

**Colors:** Navy — FrostPink — Mint — Mole



## MATERIAL COMPOSITION, TECHNICAL STANDARD & ECO PROFILE



**Material:** Shell 50% Wool, 50% Acrylic. Mulesing free wool. Jersey knit.

**Eco-Profile:** bluesign®, full line RWS® Wool. Mulesing free wool.



## REINDEER BEANIE

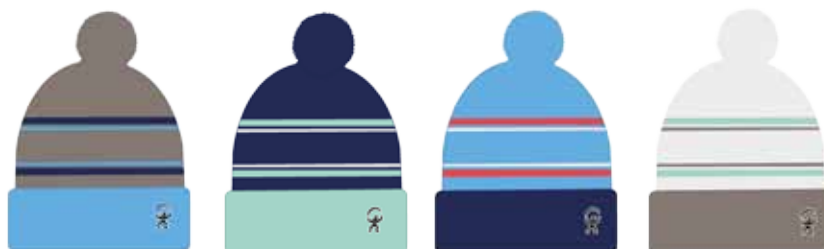
*Reindeer Beanie.* This model is a playful pom-pom double knit beanie in the same sustainable material blend as our Hawk and Eaglet Knitted Caps. The beanie has a regular cut, folded at the hem and with a pop-pom at the top. 50/50 blend of wool and acrylic, offering warmth and softness. The jersey knit construction offers a stretchy and comfortable cap to wear.

The yarn is a full line RWS® certified wool and the cap has all bluesign® certified materials.

**Art. No:** 9260

**Sizes:** M(48-52cm), L(54-58cm)

**Colors:** Mole - Navy - SkyBlue - Windchime



## MATERIAL COMPOSITION, TECHNICAL STANDARD & ECO PROFILE

**Material:** 5% Wool, 46% Nylon, 45% Acrylic, 4% Spandex.

**Eco-Profile:** Anti pilling. Long lasting product due to the high amount of Nylon.

## MINTY BEANIE

*Minty Beanie.* This model is a more luxurious beanie with a small amount of alpaca wool in it, to achieve that special softness in the handfeeling and the right fashionable look. The amount of nylon in the product, prevents pilling and secures a long lasting garment that can take a beating even if the exterior of it might give the impression that it is of a more delicate nature.

The beanie has a regular cut and a higher up-fold at the hem.

**Art. No:** 9250

**Sizes:** M(48-52cm), L(54-58cm)

**Colors:** Black - Navy - Skyblue - Mint - Frostpink - Windchime





## MATERIAL COMPOSITION, TECHNICAL STANDARD & ECO PROFILE



**Outer material:** 2-layer bluesign® approved fabric, 100% Nylon Tactel 155gr/m². Fake faux bluesign®.

**Padding:** PrimaLoft® Black Insulation 133gr/m², 100% post consumer waste

**Technical std:** 15.000mm/15.000gr/m²/24h, 100% seam sealed

**Eco profile:** bluesign® certified materials, BIONIC Finish Eco® DWR, PrimaLoft® Black, 100% recycled post consumer waste

## SQUIRREL WINTER FUR CAP

*Squirrel Winter Fur Cap* is a warm and cosy padded winter cap. Lovely fur — fake of course! The fur offers a cosy protection towards icy wind and snow. Windproof and breathable 2 layer piece. Padded with PrimaLoft® for optimal warmth to weight ratio and an outstanding comfort. There is a closing device with velcro under the chin, which also makes it easy to adjust for a perfect fit. In the back of the cap there is an adjustable buckle, to make the cap fit perfectly over

the head. This way you can also buy it a little bit oversized and grow into it. Fluorocarbene free water repellent treatment. Bluesign® certified materials.

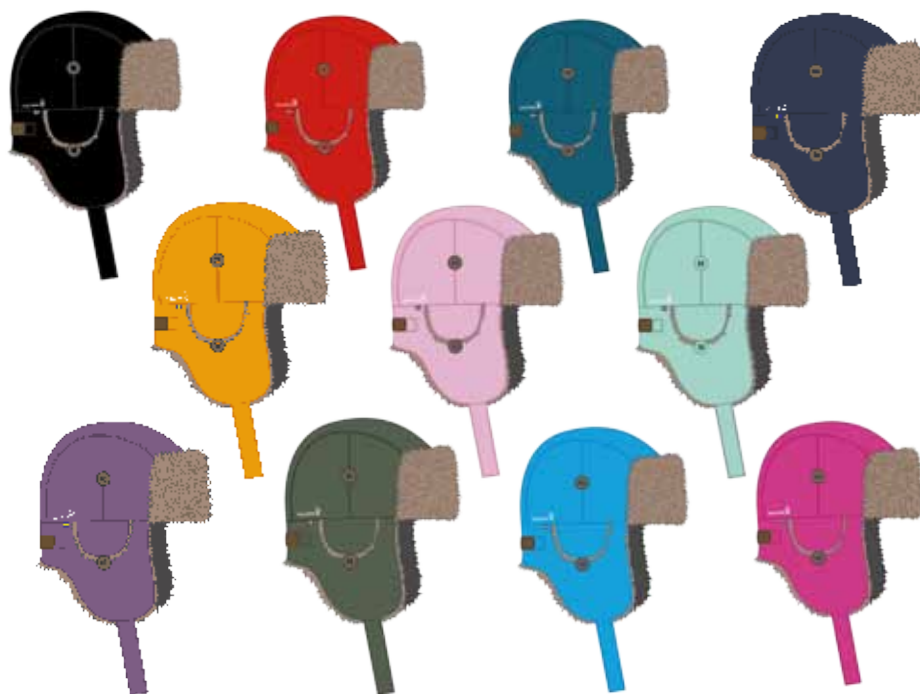
### ADJUSTABLE IN SIZE

**Art. No:** 3090

**Weight:** 155gr/m², 133gr/m²

**Sizes:** 44/46 — 48/50 — 52/54cm

**Colors:** Black — Love — Teal — Navy — Saffron — FrostPink — Mint — Lavender — Moss — SkyBlue — Smoothie



## MATERIAL COMPOSITION, TECHNICAL STANDARD & ECO PROFILE



Outer material mittens: 100% Nylon 155gr/m<sup>2</sup>

Outer material finger gloves: 100% Polyester 155gr/m<sup>2</sup>

**Padding:** PrimaLoft® Gold Insulation 60-133gr/m<sup>2</sup> (style #1730), 95% recycled post consumer waste

**Lining inside glove:** 100% PES

**Lining inside palm:** 100% PU

**Technical std:** Membrane glove

**Eco profile:** BIONIC Finish Eco®

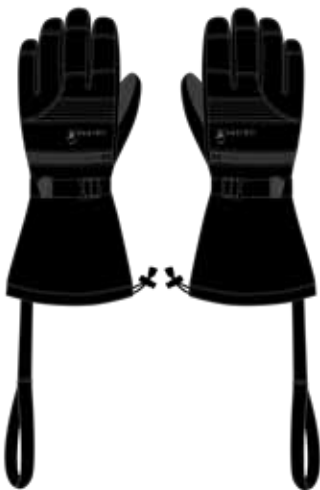
## EXPEDITION GLOVE

The *Expedition Glove* is optimal for any adventour craving that little extra something when it comes to performance. Perfect for alpine skiing for example or any other activity where you are exposed for the elements. Waterproof and breathable 2 layer piece. Optimal warmth to weight ratio and exceptionell softness with 60gr/m<sup>2</sup> PrimaLoft® Gold® padding inside. Reflector at the front part for safety. Adjustable-cord at the wrist and at the upper hem. Small pocket at the upper side of the hand, for skipass ans smaller valuables. Fluorocarbon free water repellent treatment. Bluesign® padding.

**Art. No:** 1780

**Sizes:** 9—10 yrs , 11—14 yrs

**Colors:** Black



## GRIZZLY BABY MITTEN

The *Baby Mitten* is designed for the youngest ones. Waterproof and breathable 2 layer piece. Padded with 133gr/m<sup>2</sup> PrimaLoft® Gold® for optimal warmth-to-weight ratio as well as an exceptional softness. Velcro flap opening construction enables easy on-off procedure. Soft microfleece lining inside. Reflex piping at the front part for safety. An elastic loop to be worn around the wrist to secure that the child does not drop or loose the glove whilst having a snack. Fluorocarbne free water repellent treatment.

**Art.No:** 1730. **Sizes:** 1yr, 2 yr. **Colors:** Black



## ARCTIC KIDS MITTEN

The *Kids Mitten* is designed for kids at the age of 1—6 years and is constructed with a higher outer cuff for water protection. Waterproof and breathable 2 layer piece. Padded with 60gr/m<sup>2</sup> PrimaLoft® Gold® for optimal warmth-to-weight ratio and an exceptional softness. Soft microfleece lining inside. Reflector piping at the front part for safety. An elastic loop to be worn around the wrist to secure that the child does not drop or loose the glove Fluorocarbne free water repellent treatment.

**Art.No:** 1740. **Sizes:** 3-4, 5-6 yrs  
**Colors:** SkyBlue-Bubblegum-Navy-Black



## TUNDRA KIDS FINGER GLOVE

The *Kids Glove* is a finger glove, designed for kids from the age of 5 to the age of 8 years. Waterproof and breathable 2 layer piece. Optimal warmth to weight ratio and exceptional softness with 60gr/m<sup>2</sup> PrimaLoft® Gold® padding inside. Soft microfleece lining inside. Reflector piping at the front part for safety. Adjustable at the hem. Fluorocarbne free water repellent treatment.

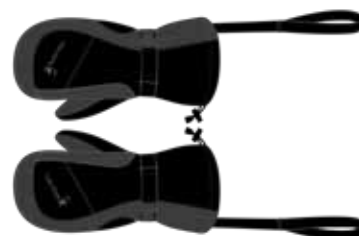
**Art.No:** 1750. **Sizes:** 5—6 yrs, 7—8 yrs  
**Colors:** Black



## BACKFLIP TEEN MITTEN

The *BackFlip Teen Mitten* is optimal for skiing and has a soft finger glove construction inside. Waterproof and breathable 2 layer piece. Optimal warmth to weight ratio and exceptional softness with 60gr/m<sup>2</sup> PrimaLoft® Gold® padding inside. Reflector at the front part for safety. Adjustable cord at the wrist and at the upper hem. Flouorocarbne free water repellent treatment.

**Art. No:** 1760.  
**Sizes:** 7—8yrs, 9—10yrs, 11—14yrs  
**Colors:** Black



## MATERIAL COMPOSITION, TECHNICAL STANDARD & ECO PROFILE



**Outer material:** 2-layer bluesign® approved fabric, 100% Nylon Tactel 155gr/m².

**Padding:** PrimaLoft® Black insulation 133gr/m², 100% post consumer waste

**Technical std:** 15.000mm/15.000gr/m²/24h, 100% seam sealed

**Eco profile:** bluesign®, BIONIC Finish Eco® DWR, PrimaLoft® Black, 100% post consumer waste.

## TODDLER PADDED SOCK

*Toddler Padded Sock* is a warm and cosy padded winter sock for the smallest ones. Windproof and breathable 2 layer piece. Padded with PrimaLoft® for optimal warmth to weight ratio and comfort. It has an elastic at the top and a velcro closing at the ankle, to secure the boot does not fall off. Fluorcarbone free water repellent treatment. Bluesign® certified materials.



**Art. No:** 4690

**Weight:** 155 gr/m²

**Sizes:** 0 — 9 or 9 — 18 months

**Colors:** Black

## MATERIAL COMPOSITION, TECHNICAL STANDARD & ECO PROFILE

**Material:** 70% RWS® certified Wool, 25% Recycled Nylon, 3% Recycled Polyester, 2% Elastane  
**Eco profile:** RWS® Wool



## SNOWCAT SKI SOCK

*SnowCat* is a technical winter and ski sock in a blend of 70% RWS-wool and recycled synthetics in order to provide a comfortable, warm and durable product. Knee length. Comfortable during high activity and sports as well as for daily use in a regular winter boot. The sock provides excellent moisture management and a cooling effect when sweating.

**Art. No:** 5190

**Sizes:** 25/27 - 28/30 - 31/33 - 34/36 - 37/39 - 40/42cm

**Colors:** FrostPink - SkyBlue - GlacierGrey





ISBJÖRN  
OF SWEDEN



## CONTACT

Nordic KidsWear AB  
Västra Finnbodavägen 2, plan 7  
131 30 Nacka,  
Sweden

Phone: +46 8 570 319 18  
E-mail: [info@isbjornofsweden.com](mailto:info@isbjornofsweden.com)

Web: [isbjornofsweden.com](http://isbjornofsweden.com)  
Facebook: [@isbjornofsweden](https://www.facebook.com/isbjornofsweden) Global  
Instagram: [@isbjornofsweden](https://www.instagram.com/isbjornofsweden) official